

Sugars & Organic Acids



Fructan & FOS



Amyloglucosidase



β -Glucan



Dietary Fiber



Lactose



α -Amylase



Resistant Starch



Total Starch



OUR PRODUCT TYPES:

Assay Kits

Enzymes

Carbohydrate

Enzyme Substrates

VALIDATED METHODS



Association of Official Analytical Chemists



American Associates of Cereal Chemists



Codex Alimentarius



International Association for Cereal Science & Technology



GB Standard



021710091-3

www.ptci.co.th



E-mail: sales@ptci.co.th



PowerTechChemicalIndustry



Diagnostic Products For Quality Management

NUTRITIONAL ANALYSIS AND RESEARCH

Assay Kit

Dietary Fiber/Starch

- ◆ Available Carbohydrates Assay Kit
- ◆ Total Dietary Fiber Assay Kit
- ◆ Digestible and Resistant Starch Assay Kit
- ◆ Starch Damage Assay Kit
- ◆ Resistant Starch Assay Kit
- ◆ Total Starch Assay Kit

Organic Acids

- ◆ Acetic Acid Assay Kit
- ◆ Ascorbic Acid Assay Kit (L-Ascorbate)
- ◆ Citric Acid Assay Kit
- ◆ L-Glutamic Acid Assay Kit
- ◆ D-3-Hydroxybutyric Acid (β-Hydroxybutyrate) Assay Kit
- ◆ D-Isocitric Acid Assay Kit
- ◆ D-Lactic Acid (D-Lactate) Assay Kit
- ◆ D-/L-Lactic Acid (D-/L-Lactate) Assay Kit
- ◆ L-Lactic Acid (L-Lactate) Assay Kit
- ◆ L-Malic Acid Assay Kit
- ◆ Phytic Acid Assay Kit
- ◆ Pyruvic Acid Assay Kit
- ◆ Succinic Acid Assay Kit
- ◆ Tartaric Acid Assay Kit

Mono/Disaccharides

- ◆ L-Arabinose/D-Galactose Assay Kit
- ◆ D-Fructose/D-Glucose Assay Kit
- ◆ L-Fucose Assay Kit
- ◆ D-Gluconic Acid/D-Glucono-δ-lactone Assay Kit
- ◆ D-Glucosamine Assay Kit
- ◆ D-Glucose Assay Kit (GOPOD Format)
- ◆ D-Glucose HK Assay Kit
- ◆ D-Glucuronic/D-Galacturonic Acid Assay Kit
- ◆ Lactose/Galactose Assay Kit
- ◆ Lactulose Assay Kit
- ◆ Maltose/Sucrose/D-Glucose Assay Kit
- ◆ D-Mannose/D-Fructose/D-Glucose Assay Kit
- ◆ Raffinose/D-Galactose Assay Kit
- ◆ Raffinose/Sucrose/D-Glucose Assay Kit
- ◆ L-Rhamnose Assay Kit
- ◆ Sucrose/D-Fructose/D-Glucose Assay Kit
- ◆ Sucrose/D-Glucose Assay Kit
- ◆ Trehalose Assay Kit
- ◆ D-Xylose Assay Kit

Enzyme Activity

- ◆ α-Amylase Assay Kit
- ◆ β-Amylase Assay Kit
- ◆ Catalase Assay Kit
- ◆ Cellulase Assay Kit
- ◆ Malt β-Glucanase/Lichenase Assay Kit
- ◆ β-Glucanase Assay Kit
- ◆ Glucose Oxidase Assay Kit
- ◆ Glucuronoyl Esterase Assay Kit
- ◆ Malt Amylase Assay Kit
- ◆ Phytase Assay Kit
- ◆ Pullulanase/Limit-Dextrinase Assay Kit (PullG6 Method)
- ◆ Xylanase Assay Kit (Xylazyme AX)

Polysaccharides

- ◆ Amylose/Amylopectin Assay Kit
- ◆ Fructan Assay Kit
- ◆ Galactomannan Assay Kit
- ◆ β-Glucan Assay Kit
- ◆ Glucomannan Assay Kit
- ◆ Pectin Identification Assay Kit

Sulfite/Nitrogen

- ◆ Ammonia Assay Kit
- ◆ L-Arginine/Urea/Ammonia Assay Kit
- ◆ Primary Amino Nitrogen Assay Kit (PANOPA)
- ◆ Total Sulfite Assay Kit
- ◆ Total and Free Sulfite Assay Kit
- ◆ Urea/Ammonia Assay Kit
- ◆ Total Sulfite Assay Kit

Alcohols

- ◆ Ethanol Assay Kit
- ◆ Glycerol Assay Kit
- ◆ myo-Inositol Assay Kit
- ◆ D-Mannitol Assay Kit
- ◆ D-Sorbitol/Xylitol Assay Kit

Other

- ◆ Acetaldehyde Assay Kit
- ◆ L-Asparagine/L-Glutamine/Ammonia Assay Kit (Rapid)
- ◆ Carrez Clarification Kit
- ◆ Formaldehyde Assay Kit
- ◆ L-Glutamine/Ammonia Assay Kit
- ◆ Hydrogen Peroxide Assay Kit
- ◆ Protein Digestibility Assay Kit
- ◆ Phosphate Assay Kit



Carbohydrates Substance and Analytical Enzyme

Carbohydrates-Oligosaccharides

- ◆ 1,5- α -L-Arabinooligosaccharides
- ◆ Arabinoxylooligosaccharides
- ◆ Cellooligosaccharides
- ◆ Chito/Chitosanooligosaccharides
- ◆ 1,3:1,4- β -D-Glucooligosaccharides
- ◆ Fructooligosaccharides
- ◆ Galactosyl-Sucrose Oligosaccharides
- ◆ Gluco-disaccharides (Various Linkages)
- ◆ 1,2- β -D-Glucooligosaccharides
- ◆ 1,3- β -D-Glucooligosaccharides
- ◆ 1,3- α -D-Glucooligosaccharides
- ◆ Isomaltooligosaccharides
- ◆ Maltooligosaccharides
- ◆ 1,4- β -D-Mannooligosaccharides
- ◆ Oligogalacturonides
- ◆ 1,4- β -D-Xylooligosaccharides

Enzyme

- ◆ α -L-Arabinofuranosidase
- ◆ Amyloglucosidase
- ◆ Amyloglucosidase Glycerol Free
- ◆ Cellobiohydrolase I
- ◆ Cellulase (endo-1,4- β -D-glucanase)
- ◆ Chitinase
- ◆ endo-1,3- β -D-Glucanase
- ◆ endo-1,4 β -Mannanase
- ◆ endo-1,4- β -Xylanase
- ◆ endo-Polygalacturonanase
- ◆ exo-1,3- β -D-Glucanase
- ◆ exo-1,3- β -D-Glucanase + β -Glucosidase
- ◆ exo-Inulinase
- ◆ exo- α -Sialidase
- ◆ Feruloyl esterase (rumen microorganism)
- ◆ Formate dehydrogenase
- ◆ Xyloglucanase (GH5)
- ◆ α -(1-2,3,4,6)-L-Fucosidase
- ◆ α -Amylase & α -Amylase (Thermostable)
- ◆ α -Amylase (Porcine Pancreatic)
- ◆ α -Fucosidase
- ◆ α -Galactosidase
- ◆ α -Glucosidase
- ◆ α -Rhamnosidase (prokaryote)
- ◆ β -Amylase
- ◆ β -D-Xylosidase
- ◆ β -Galactosidase
- ◆ β -Glucosidase
- ◆ β -Glucuronidase
- ◆ Fructanase Mixture
- ◆ Galactose dehydrogenase - Galactose mutarotase
- ◆ Hexokinase/Glucose-6-phosphate dehydrogenase
- ◆ Isoamylase (Glycogen 6-glucanohydrolase)
- ◆ Isoamylase HP (Glycogen 6-glucanohydrolase)
- ◆ Lichenase (endo-1,3:1,4- β -D-Glucanase)
- ◆ Malt Amylase Standard
- ◆ Oligo- α -1,6-Glucosidase plus β -Galactosidase
- ◆ Pectate Lyase
- ◆ Phosphoglucose isomerase
- ◆ Phosphotransacetylase
- ◆ Protease Subtilisin A
- ◆ Pullulanase
- ◆ Succinyl-CoA synthetase (prokaryote)
- ◆ Sucrase (from yeast)
- ◆ Sucrase plus β -Galactosidase

Carbohydrates-Polysaccharides

- ◆ Amylose (potato)
- ◆ Arabinan (Sugar Beet)
- ◆ Arabinoxylan (Rye Flour/Wheat Flour)
- ◆ CM-Curdlan
- ◆ Galactan (Potato)
- ◆ Galactomannan (Carob; Low Viscosity)
- ◆ β -Glucan (Barley/Oat/Yeast)
- ◆ β -Glucan CFA Standard
- ◆ β -Glucan MW Standards
- ◆ Glycogen (Algae)
- ◆ Glucomannan (Konjac; Low Viscosity)
- ◆ Levan
- ◆ Lichenan (Icelandic Moss)
- ◆ Mannan (1,4- β -D-Mannan)

Enzyme Tablet Tests

- ◆ Amylzyme Tablets (α -amylase substrate)
- ◆ Arabinzyme Tablets (endo-Arabinanase substrate)
- ◆ β -Gluczyme Tablets (endo-Cellulase, β -Glucanase /Lichenase substrate)
- ◆ Cellzyme Tablets (endo-Cellulase substrate)
- ◆ Limit-Dextrzyme Tablets (α -amylase substrate)
- ◆ Mannzyme Tablets (endo-1,4- β -Mannanase substrate)
- ◆ Protzyme Tablets (Protease activity)
- ◆ Xylzyme Tablets (endo-1,4- β -Xylanase substrate)

Soluble & Insoluble Chromogenic Substrates

- ◆ Azo-Barley Glucan (endo-Cellulase, β -Glucanase/Lichenase substrate)
- ◆ Azo-Carob Galactomannan (endo-1,4- β -Mannanase substrate)
- ◆ Azo-CM-Cellulose (endo-Cellulase substrate)
- ◆ Azo-Wheat Arabinoxylan (endo-1, 4- β -Xylanase substrate)
- ◆ Azo-Xylan (Birchwood) (endo-1, 4- β -Xylanase substrate)
- ◆ Azocasein (endo-protease substrate)
- ◆ Red Pullulan (Pullulanase/Limit-Dextrinase substrate)
- ◆ Red Starch (α -amylase activity)
- ◆ AZCL-HE-Cellulose (endo-Cellulase substrate)
- ◆ Red Debranched Arabinan (endo-Arabinanase substrate)
- ◆ Azo-Galactan (endo-1,4- β -Galactanase substrate)

Chemicals & Other

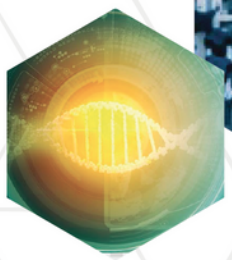
- ◆ Acetic Acid Standard Solution
- ◆ Ammonia Standard Solution (0.1 g/L)
- ◆ Citric Acid Standard Solution
- ◆ D- or L-Lactic Acid Standard Solution
- ◆ L-Malic Acid Standard Solution
- ◆ L-Tartaric Acid Standard Solution
- ◆ D-Fructose Standard Solution (6 g/L)
- ◆ D-Glucose Standard Solution (6 g/L)
- ◆ Ethanol Standard Solution (0.3 g/L)
- ◆ Isoleucine Standard Solution
- ◆ MES monohydrate Buffer Salt
- ◆ TRIS Buffer Salt
- ◆ Amberlite FPA OH- Ion Exchange Resin
- ◆ Ambersep 200 H+ Ion Exchange Resin

Enzyme Activity Assay Kits

- ◆ Amyloglucosidase Assay Reagent
- ◆ α -Amylase Assay Kit
- ◆ β -Amylase Assay Kit
- ◆ β -Glucanase Assay Kit (Malt and Microbial)
- ◆ Catalase Assay Kit
- ◆ Cellulase Assay Kit (CellG5 Method)
- ◆ Glucose Oxidase Assay Kit
- ◆ Malt Amylase Assay Kit
- ◆ Malt β -Glucanase/Lichenase Assay Kit
- ◆ Pullulanase/Limit-Dextrinase Assay Kit
- ◆ Xylanase Assay Kit

Industries We Serve





☎ 021710091-3
🌐 www.ptci.co.th

✉ E-mail: sales@ptci.co.th
📘 PowerTechChemicalIndustry

